

FIRST-TIME RIDER SAFETY



PROGRAM SAFETY TIPS

CONTACT INFO:

Phone:

905.523.2318
1-800-691-6402

Website:

www.hamiltonschoolbus.ca

School Bus First-Time Rider Safety Tips



Before school Starts...

- Walk with your child to the bus stop a few times before school starts.
- Point out landmarks at the stop to help your child know where they are to get off.
- Reinforce with your child that they are not to get off the bus at any other bus stop but their own.
- Try to visualize the routine with your child.
- Let your child know that there will be older children on the bus with them.
- Explain that the route the bus driver will take may not necessarily be the same one you would take if you were driving to the school.
- Before the first day of school, have your child repeat their route # and stop location to you and repeat it back to them until they have it memorized.

It is important to know your child's bus information including; bus operator name, route numbers, bus stop locations and scheduled pick-up/drop-off times.

- Have your child arrive at the bus stop 5-10 minutes before their pick-up time.
- Assume responsibility for your child's behavior while waiting to board the bus.
- Understand that the bus is viewed as an extension of the classroom and, as such, student discipline falls under the responsibility of the school Principal.
- Complete and update any medical/life-threatening information for your child (if applicable) and submit this information to their school.
- Make sure your child is dressed for the weather. Cold, wet weather requires hats, mittens, boots, winter jackets/raincoats and sometimes umbrellas. It's not fun to sit in class in wet clothing!
- Be sure to check the sign in the bus window for the route number, to confirm your child is getting on the correct bus. There could be several buses stopping at your bus stop.

NOTE: PARENTS MAKE THE FINAL DECISION WHETHER TO SEND THEIR CHILDREN TO SCHOOL DURING INCLEMENT WEATHER.



BULLY FREE ZONE

We promote school buses as a BULLY FREE ZONE and there is ZERO tolerance. On-going training is provided to drivers to recognize the signs of bullying.



Remember
*"we wait for the bus;
 the bus does not
 wait for us!"*

AT THE BUS STOP

Never play around when you are at your school bus stop.

When it is winter, do not stand on or play on snowbanks.

If you drop something under the bus do not try to get it back yourself.

Never go under, or reach under the school bus for any reason.

BUS CANCELLATION AND DELAYS

The decision to cancel school buses is a shared responsibility between Hamilton Wentworth Student Transportation Services, member boards and the school bus operators. The process incorporates real-time weather/road condition reports from several spotters throughout the district as well as the most current weather information available.

INCLEMENT WEATHER

BUS DELAYS

WEATHER ZONE

NOTIFICATIONS

BUS DELAYS

A bus may be delayed for various reasons such as traffic/road or weather-related conditions. School bus delays of more than 10 minutes will be posted here: www.hamiltonschoolbus.ca

INCLEMENT WEATHER

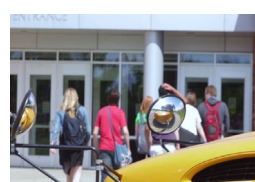
If school buses are cancelled due to inclement weather, they will be cancelled for both the morning and afternoon. Parents should always consider the safety of their own children in deciding whether or not to send them to school.

NOTIFICATIONS

Inclement weather cancellations are communicated by 6:30 am. In addition to the local radio stations, cancellations are posted on our website: www.hamiltonschoolbus.ca.

WALKING TO THE BUS STOP

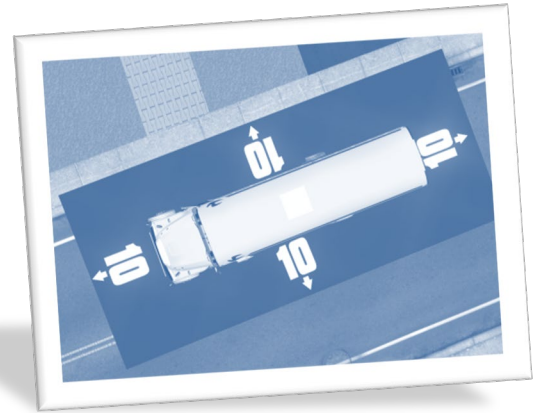
- All kindergarten students must be accompanied to and from the bus stop by an adult, guardian, or another responsible person.
- You must be 5 to 10 minutes early arriving to your bus stop. The school bus driver has a lot of students to pick up and can't wait for you if you are late.
- You should take your child to see their school before the first day. The bus may stop at other schools before or after your child's school.
- It will help your child to know what their school looks like so that they do not miss getting off at the right school.
- Also, teach your child the name of their school so they can tell the bus driver.



THE DANGER ZONE

The danger zone is an imaginary rectangle that shows you the dangerous areas around the school bus. The danger zone goes 10 steps all the way around the bus.

The most dangerous areas are in front of the bus, and behind the bus, because the driver can't see you. The bus tires are also dangerous so make sure to always stay away from them. Never go behind, or directly in front of the school bus.



Getting on the bus and riding the bus...

- Hold the handrail and take one step at a time.
- Find a seat and stay seated.
- Always face the front, do not turn around in your seat.
- Do not place anything in the aisle of the bus.
- Talk quietly so the driver can concentrate on driving.
- Remain seated at all times during the trip.
- No eating or drinking while riding the bus.

If you drop something in the Danger Zone...

NEVER, NEVER stop to pick it up, the Bus Driver may not see you.

STUDENT IDENTIFICATION PROGRAM

Hamilton Wentworth Student Transportation Services has implemented a student I.D. program for students that need to be met by a parent/guardian or other responsible person.



Getting off the bus...

- No pushing or shoving when waiting to exit the bus.
- Hold the handrail and look both ways before you step off the bus.
- When you get off the bus, if you can touch the bus, you are too close so move farther away.
- When crossing in front of the bus, take 10 giant steps away from the front of the bus.
- Make sure you can see the driver and the driver sees you.
- Look for the Bus Driver to wave you across the street before crossing.

Kindergarten Tags

Kindergarten students who are riding the school bus will be provided with a yellow tag prior to school start-up. Please ensure that the tag is attached to your child's backpack on the first day of school before they get on the bus at the end of the day. The tag will display the student's PM bus Route number and PM bus stop description. The ID tag will assist drivers in identifying kindergarten students when they are departing the bus. If your child is **not** going to take the bus, please inform the school and HWSTS prior to the first day of school and then no tag is required on your child's backpack.

Please review the information on the letter and confirm it is correct. Please inform the school immediately if the address information is incorrect.

RIDING ON THE SCHOOL BUS



Always sit with your back in the seat, facing forward.



Do not eat or drink on the bus.



Do not open the school bus windows without permission from the driver.

If your window is open, keep everything, including your arms and head, inside the bus. There are things like telephone poles, trees, cars, and trucks that could hurt you.

PICKING UP YOUR CHILD

Parents/guardians must be 5 to 10 minutes early for pickup at the end of the day. Please wait on the correct side of the road (door side). Do not stand a distance away from the bus in groups as the driver needs to match children with their parent/guardian or responsible adult.

When your child is disembarking, approach the bus door to receive him or her. This will ensure your child makes visual contact with you, their guardian, or the person responsible for meeting them at the bus stop, before they get off the bus.

Please make sure your child is aware they must not get off the bus if they don't see the person who is supposed to meet them at their bus stop. They must tell the bus driver.



NEED SOME EXTRA REVIEW?

**You can re-watch Buzzy the Bee's safety video on our website:
hamiltonschoolbus.ca/Safety/FirstRider**